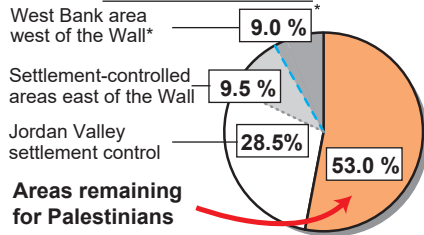


Israeli Projected Annexation Plan

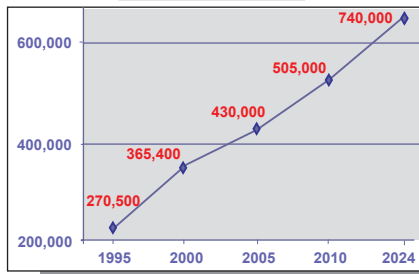
Palestinian Land Restricted by Israeli Annexation



West Bank Areas Impacted by the Projected Annexation

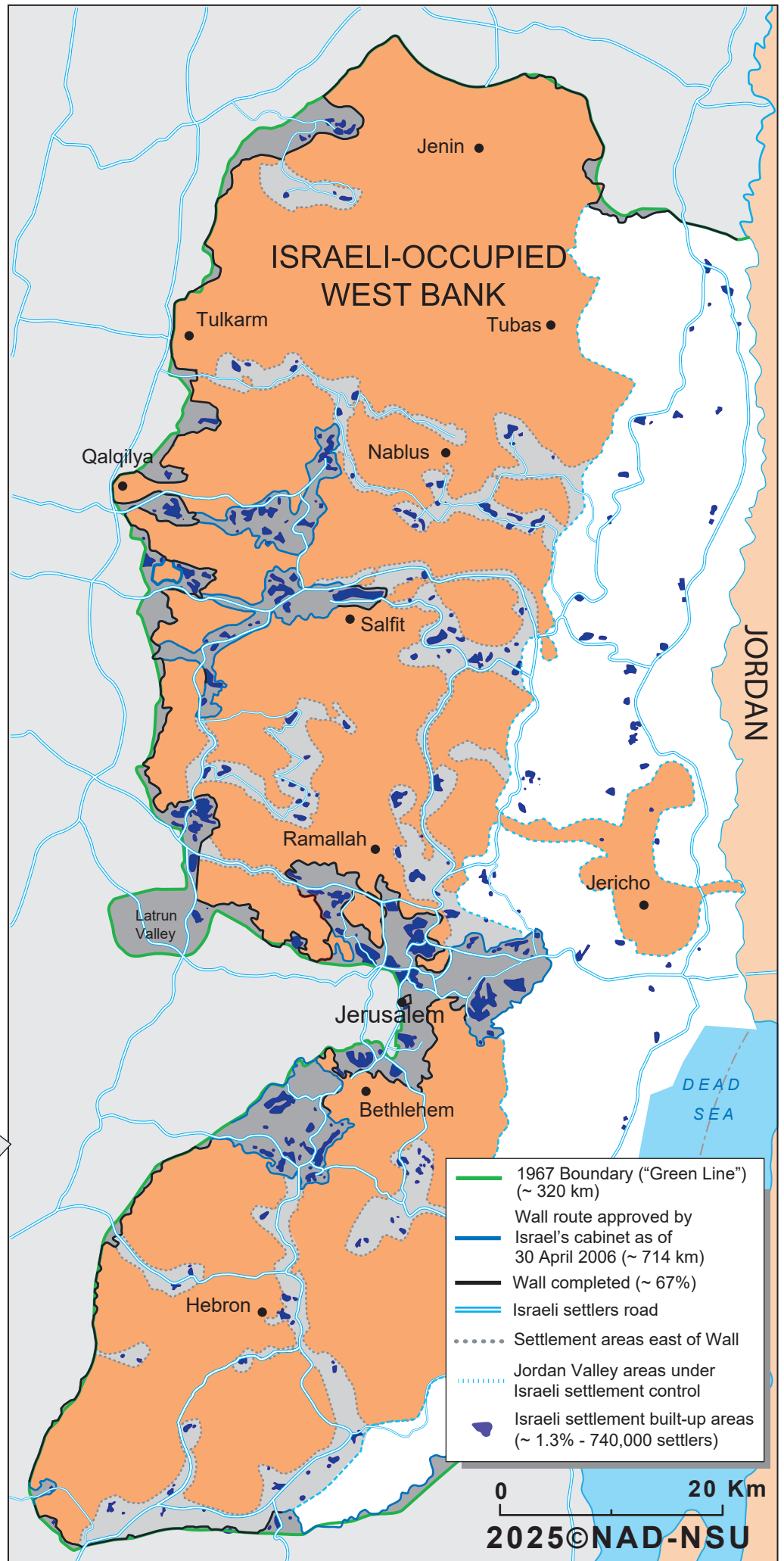
| | |
|--|------|
| Palestinian agricultural land isolated by the Projected Annexation | 80 % |
| Palestinian Population isolated by the Projected Annexation | 10 % |

Settler Population Growth Tripled Since 1995



Israeli Settlement Expansion in 2024

- 3% of the West Bank placed under Israeli enforcement in Area B.
- 4% of the West Bank allocated for illegal Israeli settler agricultural grazing farms.
- 24,000 dunams seized as "state land."
- 27,589 settlement units approved in illegal Israeli settlements of which 18,358 in E. Jerusalem.
- Approved 5 new illegal settlements.
- 50 new outposts (43 in Area C, 7 in Area B).
- 70 illegal outposts recognized for state funding.



* Figure includes the Israeli-occupied areas of East Jerusalem and the Latrun Valley